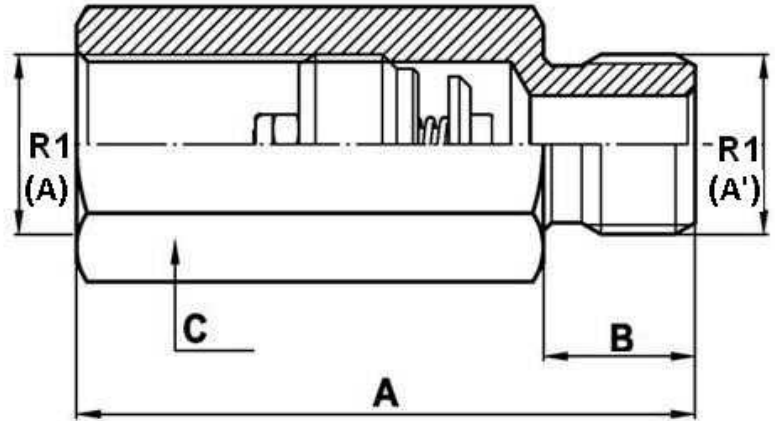
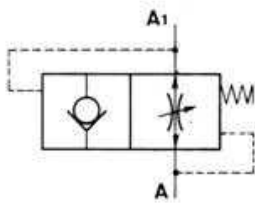


Hose break valve (male-female)



Materials: All components are steel made.

Part n°	R1	Max. flow (l/min)	Max. Press. (bar)	A	B	C
MVS 1/4	1/4" BSP	25	350	50	12	19
MVS 3/8	3/8" BSP	50	350	58	12	22
MVS 1/2	1/2" BSP	80	350	70	14	27
MVS 3/4	3/4" BSP	150	350	78	16	36
MVS 1	1" BSP	200	300	92	18	46