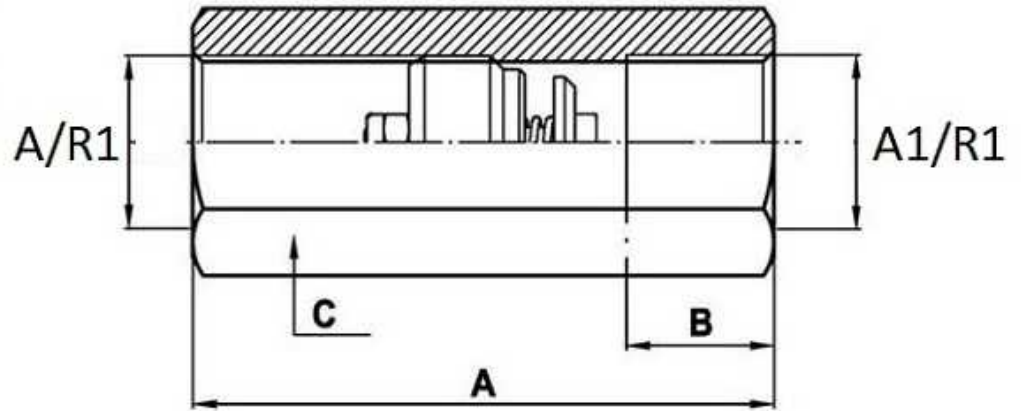
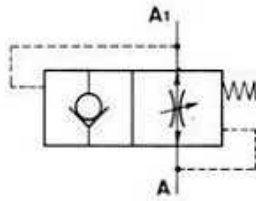


Hose break valve (female-female)

Materials: All components are steel made.

Part n°	R1	Max. flow (l/min)	Max. Press. (bar)	A	B	C
FVS 1/4	1/4" BSP	25	350	48	12	19
FFP 3/8	3/8" BSP	50	350	52	12	22
FVS 3/8	3/8" BSP	50	350	52	12	22
FVS 1/2	1/2" BSP	80	350	62	14	27
FVS 3/4	3/4" BSP	150	350	72	16	36
FFP 1	1" BSP	200	300	86	20	46
FVS 1	1" BSP	200	300	86	20	46