

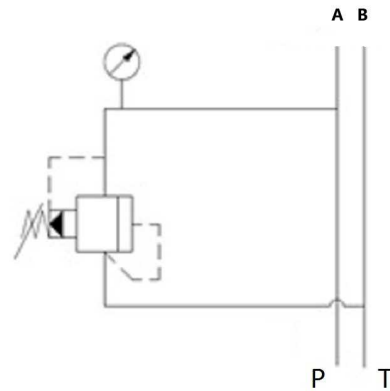
Solenoid valves

Subplates for NG6

## Subplate for NG6 directional valves, one element, with relief valve, A & B side ports

Carbon steel, blued treatment

Page: 1/1



A, B 3/8" BSP

P, T 1/2" BSP

Part n°	R1	N° directional valves	Flow (l/min)
PF1CL180 H	3/8" BSP	1	40

\*\*\* Review attached PDF\*\*\*

Maximum flow: 40 L/min

Regulation rate: 20-250 bar

It includes pressure gauge intake female thread 1/4" BSP

Maximum pressure supported in the system 350 Bar