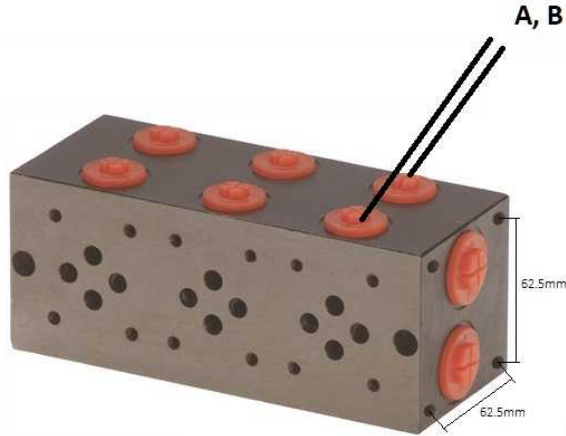


Solenoid valves

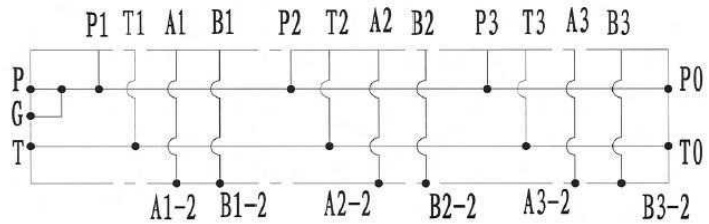
Subplates for NG6

Parallel subplate for NG6 directional valve without relief valve, A & B side ports

Page: 1/1



P, T = 1/2" BSP



Forged steel

Part n°	R1	N° directional valves	Flow (l/min)
PF2PL H	3/8" BSP	2	40
PF3PL H	3/8" BSP	3	40
PF4PL H	3/8" BSP	4	40
PF5PL H	3/8" BSP	5	40
PF6PL H	3/8" BSP	6	40
PF7PL H	3/8" BSP	7	40
PF8PL H	3/8" BSP	8	40
PF9PL H	3/8" BSP	9	40
PF10PL H	3/8" BSP	10	40

*** Review attached PDF***

Maximum flow: 40 L/min