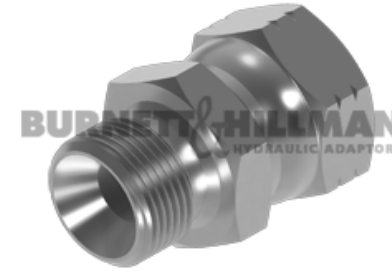
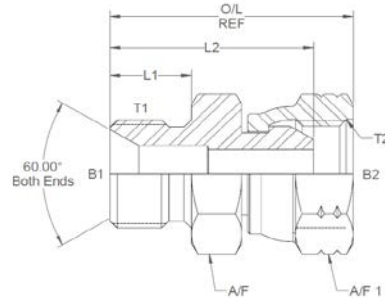


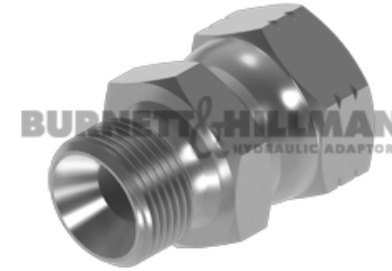
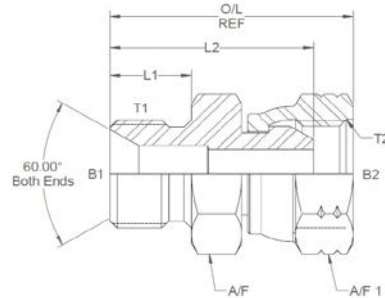
All dimensions are imperial unless stated.



| | T1 | T2 | B1 | B2 | L1 | L2 | O/L | A/F | A/F1 |
|-------|-----|-----|-------|-------|------|-------|------|------|------|
| 31425 | 1/8 | 1/8 | 0.137 | 0.125 | 0.44 | 1.12 | 1.32 | 14mm | 14mm |
| 31427 | 1/4 | 1/4 | 0.25 | 0.172 | 0.45 | 1.16 | 1.37 | 19mm | 19mm |
| 31429 | 1/4 | 3/8 | 0.185 | 0.185 | 0.45 | 1.242 | 1.5 | 19mm | 22mm |
| 31433 | 3/8 | 1/4 | 0.312 | 0.172 | 0.52 | 1.25 | 1.45 | 22mm | 19mm |
| 31434 | 3/8 | 3/8 | 0.312 | 0.271 | 0.52 | 1.347 | 1.6 | 22mm | 22mm |
| 31435 | 3/8 | 1/2 | 0.312 | 0.312 | 0.52 | 1.363 | 1.65 | 22mm | 27mm |
| 31438 | 1/2 | 1/4 | 0.437 | 0.172 | 0.6 | 1.38 | 1.59 | 27mm | 19mm |
| 31439 | 1/2 | 3/8 | 0.437 | 0.271 | 0.6 | 1.472 | 1.72 | 27mm | 22mm |
| 31440 | 1/2 | 1/2 | 0.437 | 0.375 | 0.6 | 1.498 | 1.83 | 27mm | 27mm |
| 31468 | 3/4 | 1/4 | 0.659 | 0.172 | 0.75 | 1.57 | 1.76 | 32mm | 19mm |
| 31448 | 3/4 | 3/8 | 0.659 | 0.271 | 0.75 | 1.672 | 1.93 | 32mm | 22mm |
| 31449 | 3/4 | 1/2 | 0.659 | 0.375 | 0.75 | 1.688 | 1.98 | 32mm | 27mm |
| 31451 | 3/4 | 3/4 | 0.659 | 0.6 | 0.75 | 1.66 | 2.05 | 32mm | 32mm |
| 31453 | 3/4 | 1 | 0.718 | 0.718 | 0.75 | 1.728 | 2.18 | 41mm | 41mm |
| 31452 | 0 | 0 | 0 | 0 | 0 | 0 | 0 | 0 | 0 |
| 31482 | 0 | 0 | 0 | 0 | 0 | 0 | 0 | 0 | 0 |
| 31458 | 1 | 1 | 0.875 | 0.797 | 0.8 | 1.778 | 2.25 | 41mm | 41mm |

DESIGN DETAILS AND SPECIFICATIONS SUBJECT TO CHANGE WITHOUT PRIOR NOTICE - Whilst every effort has been made to ensure the accuracy of the information supplied herein, Burnett & Hillman cannot be held responsible for any errors or omissions (E&OE)

A/F dimensions are imperial unless stated.



| | T1 | T2 | B1 | B2 | L1 | L2 | O/L | A/F | A/F1 |
|-------|-----|-----|-------|-------|-------|-------|-------|------|------|
| 31425 | 1/8 | 1/8 | 3.48 | 3.18 | 11.18 | 28.45 | 33.53 | 14mm | 14mm |
| 31427 | 1/4 | 1/4 | 6.35 | 4.37 | 11.43 | 29.46 | 34.8 | 19mm | 19mm |
| 31429 | 1/4 | 3/8 | 4.7 | 4.7 | 11.43 | 31.55 | 38.1 | 19mm | 22mm |
| 31433 | 3/8 | 1/4 | 7.92 | 4.37 | 13.21 | 31.75 | 36.83 | 22mm | 19mm |
| 31434 | 3/8 | 3/8 | 7.92 | 6.88 | 13.21 | 34.21 | 40.64 | 22mm | 22mm |
| 31435 | 3/8 | 1/2 | 7.92 | 7.92 | 13.21 | 34.62 | 41.91 | 22mm | 27mm |
| 31438 | 1/2 | 1/4 | 11.1 | 4.37 | 15.24 | 35.05 | 40.39 | 27mm | 19mm |
| 31439 | 1/2 | 3/8 | 11.1 | 6.88 | 15.24 | 37.39 | 43.69 | 27mm | 22mm |
| 31440 | 1/2 | 1/2 | 11.1 | 9.53 | 15.24 | 38.05 | 46.48 | 27mm | 27mm |
| 31468 | 3/4 | 1/4 | 16.74 | 4.37 | 19.05 | 39.88 | 44.7 | 32mm | 19mm |
| 31448 | 3/4 | 3/8 | 16.74 | 6.88 | 19.05 | 42.47 | 49.02 | 32mm | 22mm |
| 31449 | 3/4 | 1/2 | 16.74 | 9.53 | 19.05 | 42.88 | 50.29 | 32mm | 27mm |
| 31451 | 3/4 | 3/4 | 16.74 | 15.24 | 19.05 | 42.16 | 52.07 | 32mm | 32mm |
| 31453 | 3/4 | 1 | 18.24 | 18.24 | 19.05 | 43.89 | 55.37 | 41mm | 41mm |
| 31452 | 0 | 0 | 0 | 0 | 0 | 0 | 0 | 0 | 0 |
| 31482 | 0 | 0 | 0 | 0 | 0 | 0 | 0 | 0 | 0 |
| 31458 | 1 | 1 | 22.23 | 20.24 | 20.32 | 45.16 | 57.15 | 41mm | 41mm |

DESIGN DETAILS AND SPECIFICATIONS SUBJECT TO CHANGE WITHOUT PRIOR NOTICE - Whilst every effort has been made to ensure the accuracy of the information supplied herein, Burnett & Hillman cannot be held responsible for any errors or omissions (E&OE)