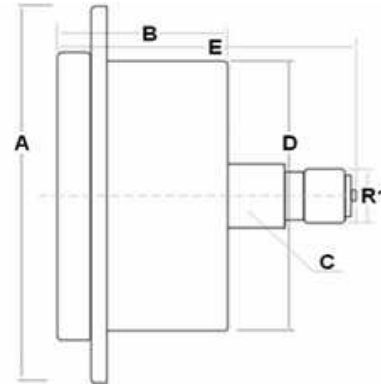


Pressure and vacuum gauges

Pressure gauges

Pressure gauge DN 100 rear connection with glycerin (1/2" BSP)

Page: 1/2



Accuracy: 1,6%

Dimensions: A=128
B=39
C=22
D=98,5
E=82

Temperature: from -10 up to +60

Material: Case: stainless steel 304
Ring: stainless steel 304
Window: polycarbonate (glass)
Socket & Connection: brass

Part n°	R1	Scale (bar)
MFI10008001-DB	1/2" BSP	0-1
MFI100082.5-DB	1/2" BSP	0-2.5
MFI10008004-DB	1/2" BSP	0-4
MFI10008006-DB	1/2" BSP	0-6
MFI10008010-DB	1/2" BSP	0-10
MFI10008016-DB	1/2" BSP	0-16
MFI10008025-DB	1/2" BSP	0-25
MFI10008040-DB	1/2" BSP	0-40
MFI10008060-DB	1/2" BSP	0-60
MFI10008100-DB	1/2" BSP	0-100
MFI10008160-DB	1/2" BSP	0-160
MFI10008250-DB	1/2" BSP	0-250
MFI10008315-DB	1/2" BSP	0-315

Pressure and vacuum gauges

Pressure gauges

Pressure gauge DN 100 rear connection with glycerin (1/2" BSP)

Page: 2/2

Part n°	R1	Scale (bar)
MFI10008400-DB	1/2" BSP	0-400
MFI10008600-DB	1/2" BSP	0-600

*** Review attached PDF***

With dual bar/psi scale
IP65