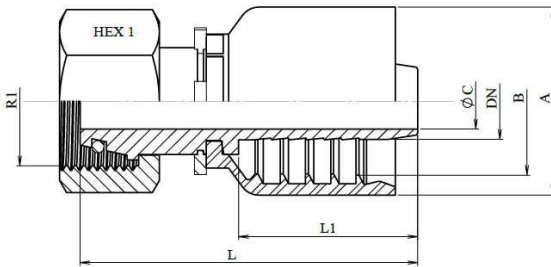
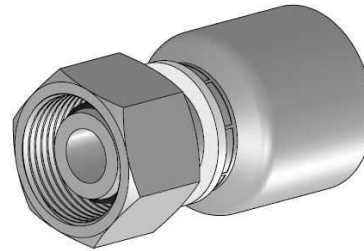


One piece Metric female cone 24°

Mild Steel 1.0737 (or equivalent)



Part nº	DN	PIPE	SERIES	R1	L	L1	HEX 1	C	A	B	Details
28804120604	1/4"	6	L	M12x1.5	47,5	24	14	3	23	16,9	24804120604 + PFC221200400
28804140804	1/4"	8	L	M14x1.5	52	28	17	4	23	16,9	24804140804 + PFC221200400
28804161004	1/4"	10	L	M16x1.5	52	28	19	4	23	16,9	24804161004 + PFC221200400
28804161005	5/16"	10	L	M16x1.5	52,3	28	19	5,5	23,7	17,5	24804161005 + PFC221200500
28804161006	3/8"	10	L	M16x1.5	52,5	29,5	19*	7	28	20,7	24804161006 + PFC221200600
28804181204	1/4"	12	L	M18x1.5	53,5	28	22	4	23	16,9	24804181204 + PFC221200400
28804181205	5/16"	12	L	M18x1.5	53,8	28	22	5,5	23,7	17,5	24804181205 + PFC221200500
28804181206	3/8"	12	L	M18x1.5	55,5	29,5	22	7	28	20,7	24804181206 + PFC221200600
28804181208	1/2"	12	L	M18x1.5							24804181208 + PFC221200800
28804221506	3/8"	15	L	M22x1.5	56	29,5	27	7	28	20,7	24804221506 + PFC221200600
28804221508	1/2"	15	L	M22x1.5	57,5	30,5	27	9,5	32	24,8	24804221508 + PFC221200800
28804261808	1/2"	18	L	M26x1.5	59,2	30,5	32	9,5	32	24,8	24804261808 + PFC221200800
28804261810	5/8"	18	L	M26x1.5	63	34	32	12	34	27	24804261810 + PFC221201000
28804302210	5/8"	22	L	M30x2							24804302210 + PFC221201000
28804302212	3/4"	22	L	M30x2	71,5	39	36	15	40	32	24804302212 + PFC221201200
28804362812	3/4"	18	L	M36x2							24804362812 + PFC221201200
28804362816	1"	28	L	M36x2	79	47	41	19	47	39	24804362816 + PFC221201600
28804453520	1"1/4	35	L	M45x2	93,5	54,5	50	26	59,8	49,5	24804453520 + PFC221202000
28804524224	1"1/2	42	L	M52x2	96,8	58	60	32	67,6	56	24804524224 + PFC221202400
28804140604	1/4"	6	S	M14x1.5							24804140604 + PFC221200400
28804160804	1/4"	8	S	M16x1.5	53,5	28	19	4	23	16,9	24804160804 + PFC221200400
28804181004	1/4"	10	S	M18x1.5	55	28	22	4	23	16,9	24804181004 + PFC221200400
28804181006	3/8"	10	S	M18x1.5							24804181006 + PFC221200600
28804201204	1/4"	12	S	M20x1.5							24804181204 + PFC221200400
28804201205	5/16"	12	S	M20x1.5	55,8	28	24	5,5	23,7	17,5	24804201205 + PFC221200500
28804201206	3/8"	12	S	M20x1.5	57	29,5	24	7	28	20,7	24804201206 + PFC221200600
28804201208	1/2"	12	S	M20x1.5	56	30,5	24*	9,5	32	24,8	24804201208 + PFC221200800

The information gathered in this technical documentation (Catalogue) has an informative character and can be modified without previous notice. DICSA will not accept any type of responsibility resulting from an inappropriate use of the product, except the ones related to manufacturing defects.

One piece Metric female cone 24°

Mild Steel 1.0737 (or equivalent)

2/2

Part n°	DN	PIPE	SERIES	R1	L	L1	HEX 1	C	A	B	Details
28804221406	3/8"	14	S	M22X1.5	60,8	29,5	27	7	28	20,7	24804221406 + PFC221200600
28804221408	1/2"	14	S	M22X1.5							24804221408 + PFC221200800
28804241608	1/2"	16	S	M24x1.5	61	30,5	30	9,5	32	24,8	24804241608 + PFC221200800
28804241610	5/8"	16	S	M24x1.5	61	34	30	12	32	24,8	24804241610 + PFC221201000
28804302008	1/2"	20	S	M30x2							24804302010 + PFC221201000
28804302010	5/8"	20	S	M30x2	68,8	34	36	12	34	27	24804302010 + PFC221201000
28804302012	3/4"	20	S	M30x2	76	39	36	15	40	32	24804302012 + PFC221201200
28804362512	3/4"	25	S	M36x2	79	39	46	15	40	32	24804362512 + PFC221201200
28804362516	1"	25	S	M36x2	87,5	47	46	19	47	39	24804362516 + PFC221201600
28804423016	1"	30	S	M42x2	89,5	47	50	19	47	39	24804423016 + PFC221201600
28804523820	1"1/4	38	S	M52x2	102,5	54,5	60	26	59,8	49,5	24804523820 + PFC221202000

* NOTE: In this reference the nut is crimped