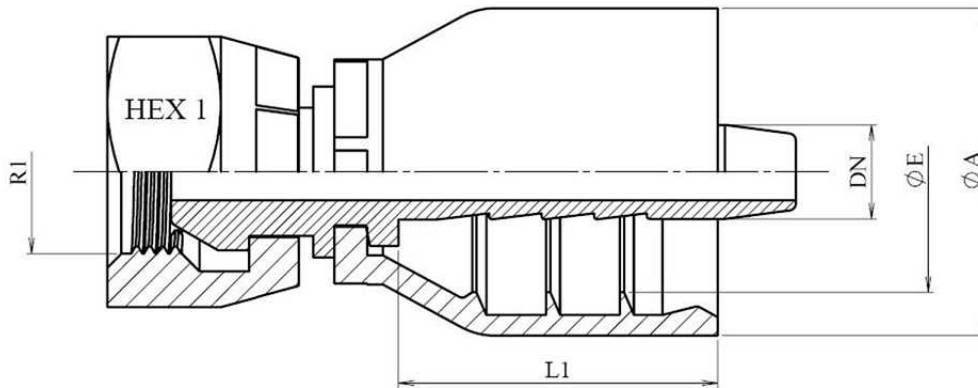
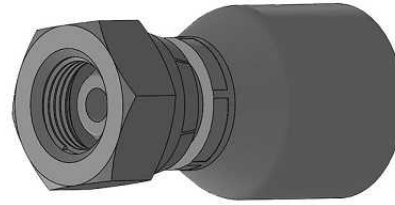


## One piece BSP female 60° cone

Mild Steel



Part nº	DN	R1	Details	L1	HEX 1	ØA	ØE
<b>281000204</b>	1/4"	1/8" BSP	241000204 + PFC221200400	22,5	14	23	16,9
<b>281000404</b>	1/4"	1/4" BSP	241000404 + PFC221200400	22,5	19	23	16,9
<b>281000405</b>	5/16"	1/4" BSP	241000405 + PFC221200500	23	19	23,7	17,5
<b>281000406</b>	3/8"	1/4" BSP	241000406 + PFC221200600	23,5	19	28	20,7
<b>281000604</b>	1/4"	3/8" BSP	241000604 + PFC221200400	22,5	22	23	16,9
<b>281000605</b>	5/16"	3/8" BSP	241000605 + PFC221200500	23	22	23,7	17,5
<b>281000606</b>	3/8"	3/8" BSP	241000606 + PFC221200600	23,5	22	28	20,7
<b>281000608</b>	1/2"	3/8" BSP	241000608 + PFC221200800	26,4	22	32	24,8
<b>281000804</b>	1/4"	1/2" BSP	241000804 + PFC221200400	22,5	27	23	16,9
<b>281000806</b>	3/8"	1/2" BSP	241000806 + PFC221200600	23,5	27	28	20,7
<b>281000808</b>	1/2"	1/2" BSP	241000808 + PFC221200800	26,4	27	32	24,8
<b>281001008</b>	1/2"	5/8" BSP	241001008 + PFC221200800	26,4	30	32	24,8
<b>281001210</b>	5/8"	3/4" BSP	241001210 + PFC221201000	34	32	34	27
<b>281001212</b>	3/4"	3/4" BSP	241001212 + PFC221201200	34,9	32	40	32
<b>281001612</b>	3/4"	1" BSP	241001612 + PFC221201200	34,9	41	40	32