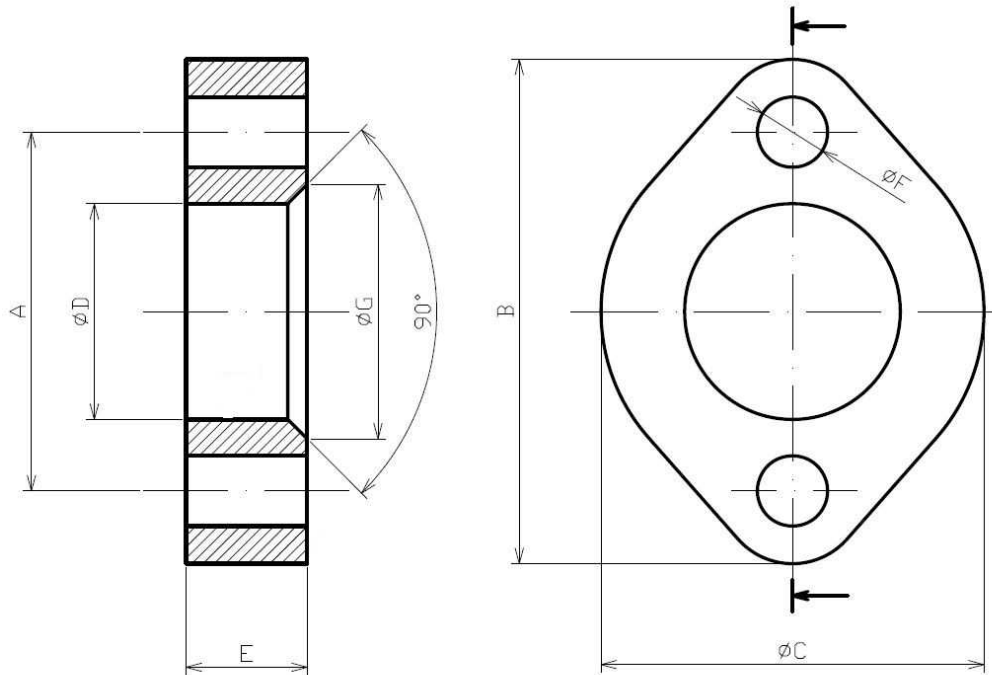


**Male Poclain flange 2 holes**

Mild Steel

**1/1**

Part n°	ØD1	ØC	ØD	ØF	ØG	A	B	E
<b>448071010</b>	5/8"	48	24	8,5	27	44,4	60	14
<b>448071212</b>	3/4"	60	28,5	10,5	32	56,1	76	18
<b>448071616</b>	1"	70	37,5	12,5	43	63,6	88	22
<b>448072020</b>	1"1/4	78	44	14,5	49	73,9	103	25