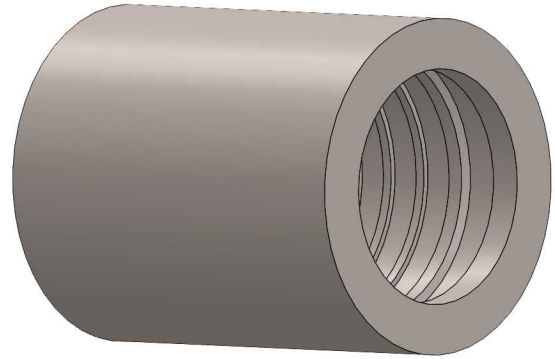
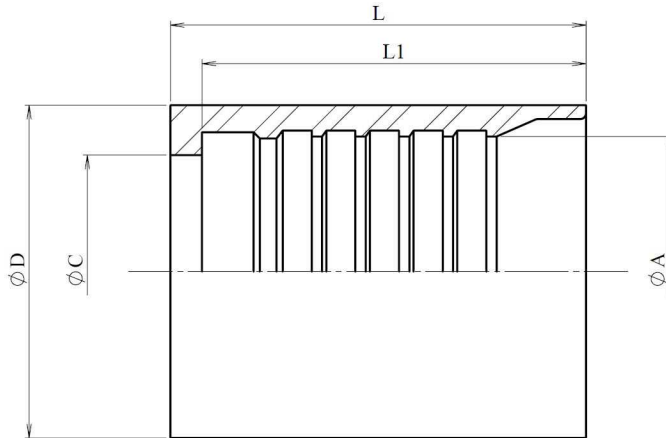


Ferrules DIN 20023-4SH

Mild Steel 1.0737 (EN 10.277-3)



Part n°	DN	Details	L	L1	ØA	ØC	ØD
A610101200	3/4"	4SH / R13 / R15	62	58,3	30	24,1	40
A610101600	1"	4SH / R13 / R15	75	70,4	37,5	30	47
A610102000	1"1/4	4SH	82	76,5	44	36,5	56
A610102400	1"1/2	4SH	93	86,8	50,3	44,4	63
A610103200	2"	4SH	100	92,4	65	56	80