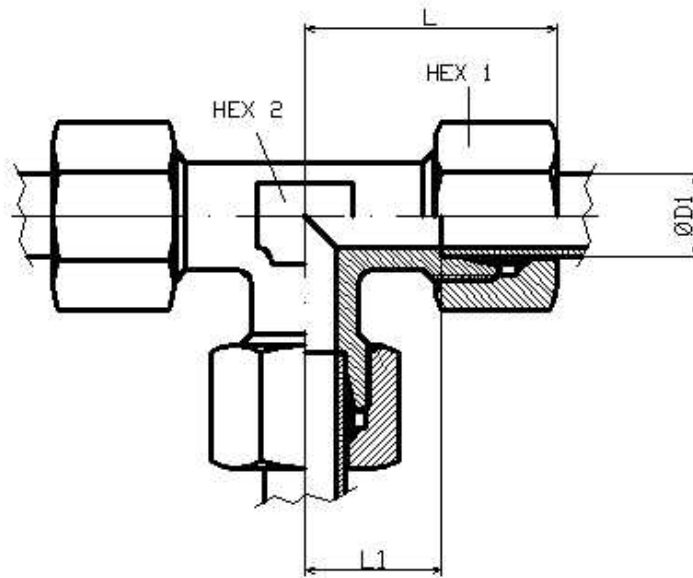


Equal Tee

Stainless Steel AISI 316-L



Part n°	ØD1	Serie	Working Pressure (bar)	L	L1	HEX 1	HEX 2
Z TLL 4	4	LL	100	21,0	11	10	9
Z TLL 6	6	LL	100	21,0	9,5	12	9
Z TLL 8	8	LL	100	23,0	11,5	14	12
Z TL 6	6	L	315	27,0	12	14	12
Z TL 8	8	L	315	29,0	14	17	12
Z TL 10	10	L	315	30,0	15	19	14
Z TL 12	12	L	315	32,0	17	22	17
Z TL 15	15	L	315	36,0	21	27	19
Z TL 18	18	L	315	40,0	23,5	32	24
Z TL 22	22	L	160	44,0	27,5	36	27
Z TL 28	28	L	160	47,0	30,5	41	36
Z TL 35	35	L	160	56,0	34,5	50	41
Z TL 42	42	L	160	63,0	40	60	50
Z TS 6	6	S	630	31,0	16	17	12
Z TS 8	8	S	630	32,0	17	19	14
Z TS 10	10	S	630	34,0	17,5	22	17
Z TS 12	12	S	630	38,0	21,5	24	17
Z TS 14	14	S	630	40,0	22	27	19
Z TS 16	16	S	400	43,0	24,5	30	24
Z TS 20	20	S	400	48,0	26,5	36	27
Z TS 25	25	S	400	54,0	30	46	36
Z TS 30	30	S	400	62,0	35,5	50	41
Z TS 38	38	S	315	72,0	41	60	50